

Projekt **Communicating Bodies**
Supervision **Mika Satomi**
WS 21/22

Marie Rasper
Madleen Albrecht
Linda Kettler

a forest, floating

a stress relief tool

Let's step on this
map , carefully. It
is an unknown terrain
we must explore. Be a
gentle giant, feel the
valleys and the moun-
tains, listen to the
sounds of a new world.
On this planet you can
float, but only short-
ly- earth, water, air
and fire are yours to
play with.





Floating is an intermediate state of in betweenness that cannot last on earth we are bound by gravity. Losing the ground under your feet, finding balance can be unnerving, scary even but also liberating. We use this ephemeral feeling in a subtle, soft way-recalibrating your senses in a mindful experiment can be seen as a therapeutic tool.





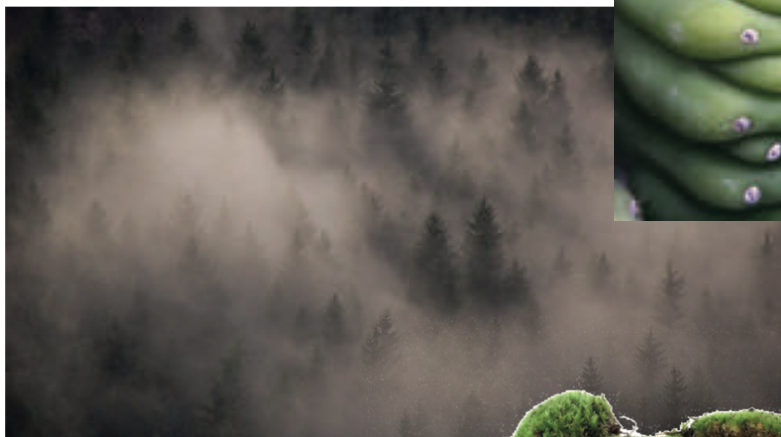
Feet are highly sensitive- the skin on our feet contains an extensive network of nerve endings which make them receptive to many different kinds of stimuli such as pressure, temperature, vibrations or pain.

The Floating Forest is a functional geomorphological map with varying grounds that enhances both your body awareness and concentration. The hearing and feeling of a landscape, exploring it with tactile meditation acts as a source of stress relief and recreation.

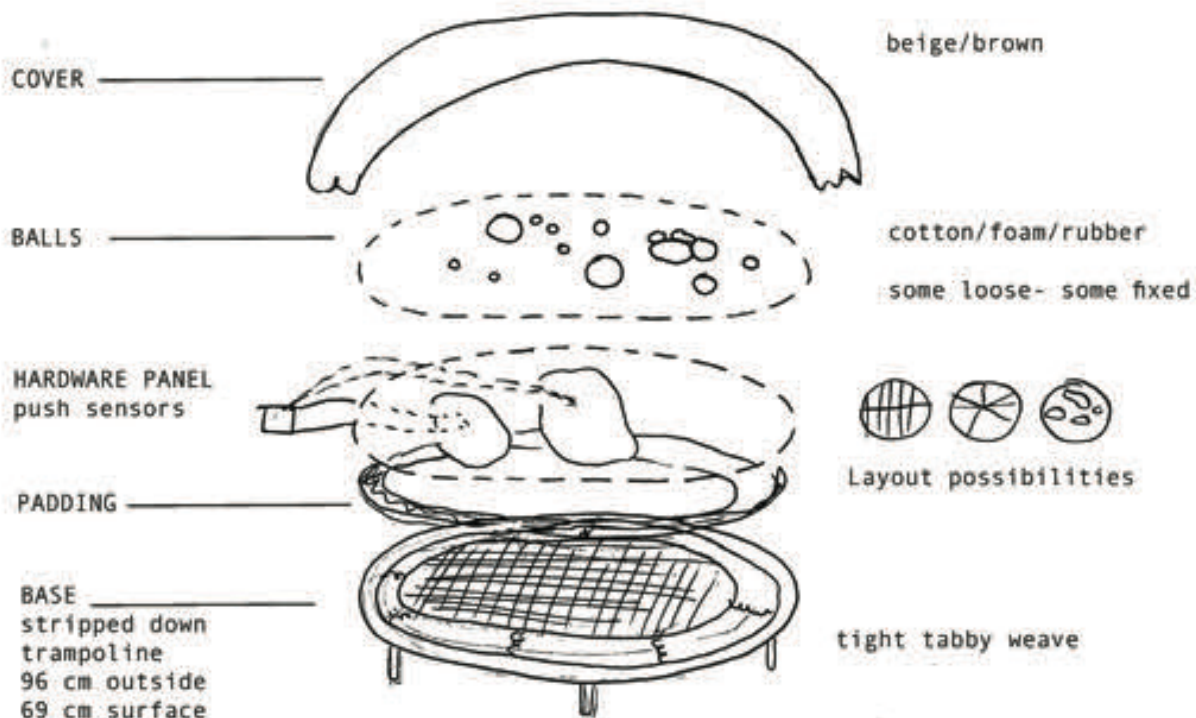




Moodboard



Process





FLOATING





Pattern

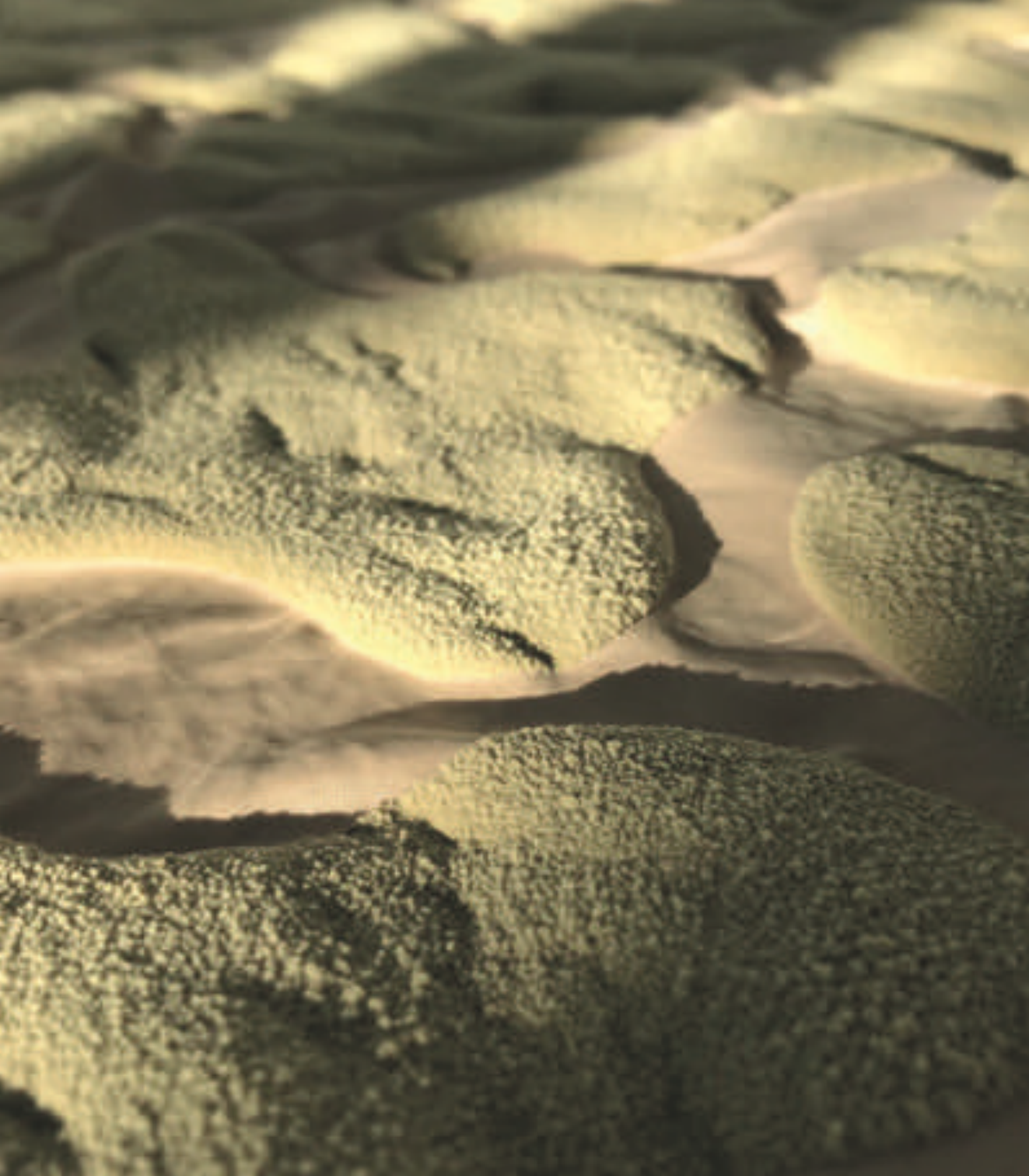
Screenprint and Lasercut Pattern

Puff Paint

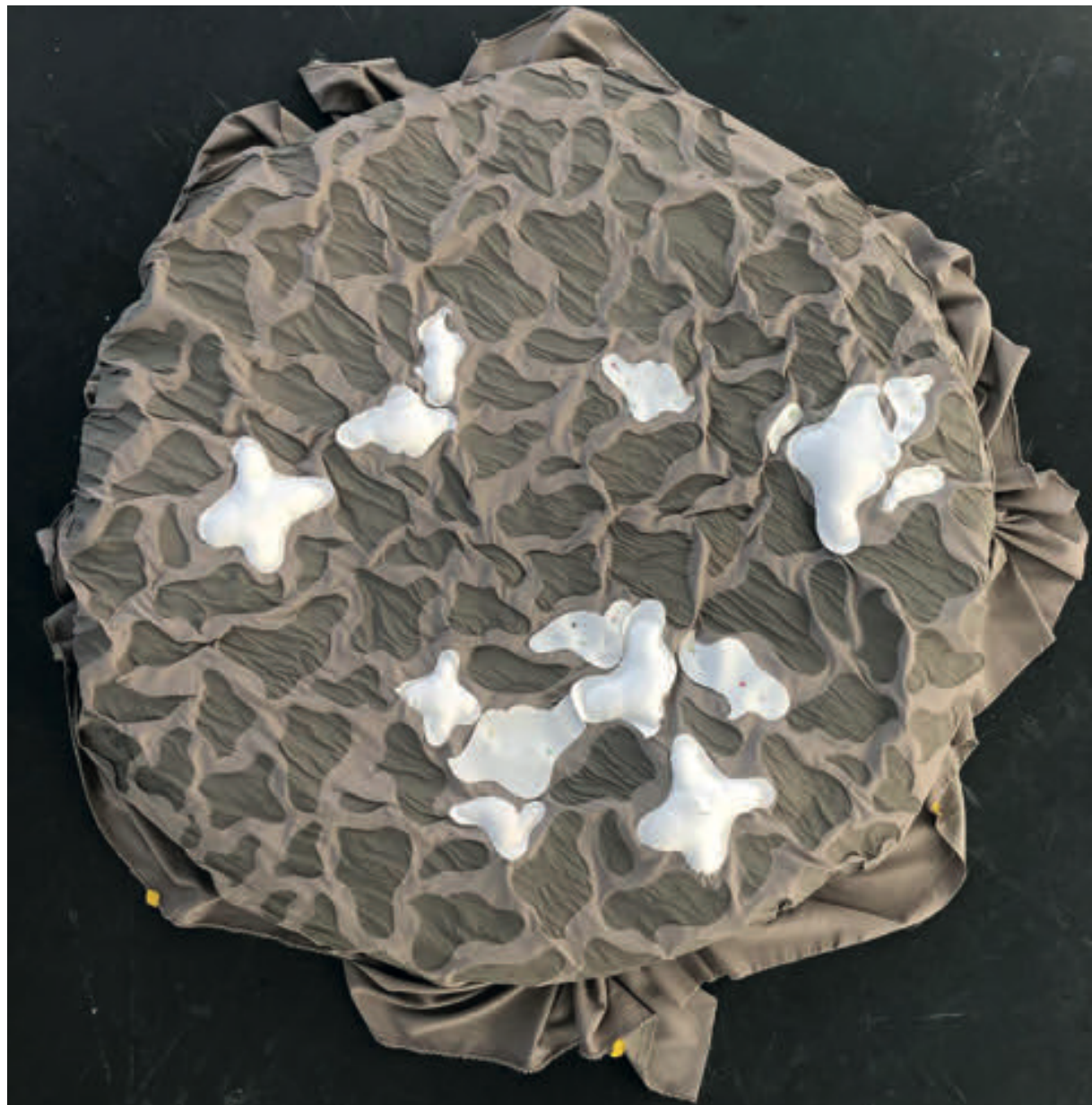


Screenprinted puff paint.
When heated it fluffs up- half developed with a
suitable surface a lichen effect is created.









Filling



Filling the forms with different granules.







FIRE



WATER

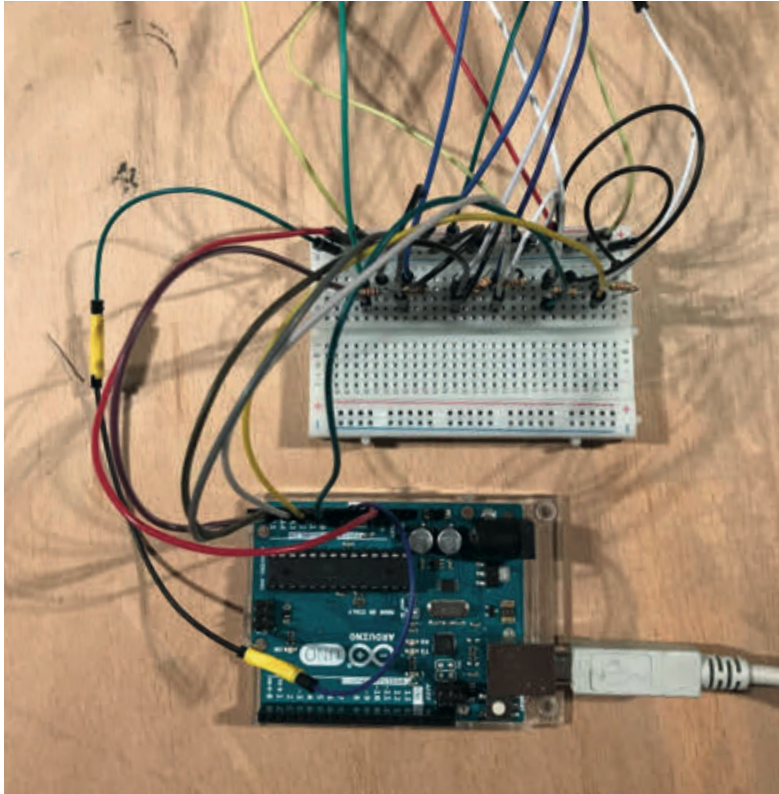


AIR

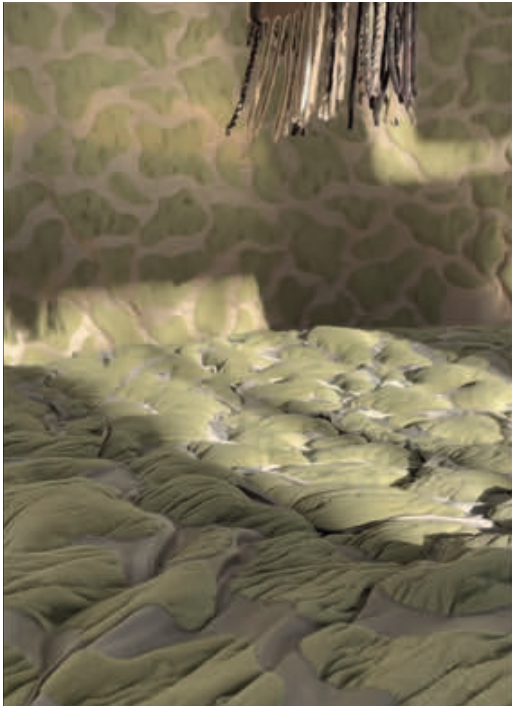


EARTH

Arduino & Pd



Arduino and breadboard to track each sensor









Thank you,

Mika Satomi

Daniela Burger

Fabian Neumüller

